



# Marin Coalition - The Future of Marin's Farms and Ranches

Lily Verdone, Executive Director, MALT

February 23, 2023



# OUR HISTORY

MALT was born out of the desire to protect farmland and the landscapes of West Marin from development and subdivision.

It was an idea ahead of its time when dairy farmer, Ellen Straus and biologist, Phyllis Faber laid plans for the nation's first agricultural land trust in founding MALT in 1980.

More than 55,000 acres as permanent working farmland has been protected forever through the acquisition of conservation easements in voluntary transactions with landowners.



# OUR IMPACT TO DATE

55,182

acres protected

92

agricultural conservation easements

\$95,580,595

invested in protecting Marin farms and ranches since 1980

## MALT-PROTECTED LANDS INCLUDE



252 miles of creeks and streams



645 acres of wetlands



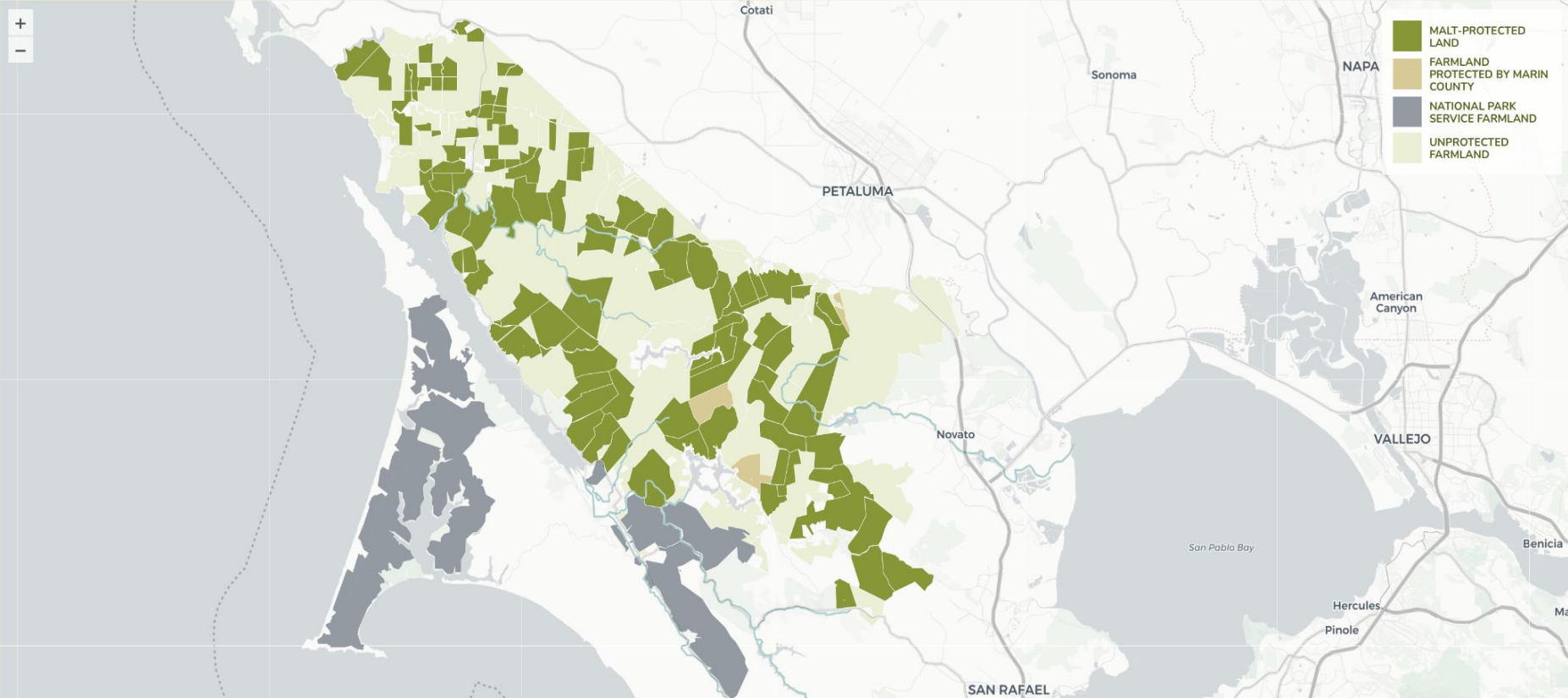
13,050 acres of forested habitat



33,673 acres of grassland/rangeland

# WHERE WE WORK

## MALT-PROTECTED FARMS AND RANCHES



# OUR STRATEGY

## Marin Agricultural Land Trust

**Mission:** To permanently protect Marin's agricultural land for agricultural use.

**Vision:** Marin County is a thriving and inclusive agricultural community in a healthy and diverse natural environment.

-  **Preserve Agriculture** - Conserve the most important farmland to support a thriving, economically viable agricultural community in Marin.
-  **Protect Biodiversity** - Protect, restore, and/or improve agricultural lands to benefit wildlife habitat, connectivity, soil health, and water quality.
-  **Build Climate Resilience** - Incentivize and accelerate climate smart agricultural practices and nature-based solutions that deliver climate resilience.
-  **Connect Our Community** - Inspire and build a constituency to increase awareness of the public benefit of protecting agricultural land.
-  **Strengthening Our Organization** - Position the organization for success and longevity into the future.

# HOW WE WORK

## Agricultural Conservation Easements

- 723-acre McDowell Ranch (Aug. 22)
- Pipeline of ~3,600 acres farmland
- Easementing monitoring

## Land Stewardship

- Drought Resilience & Water Security (DRAWS)
- Stewardship Assistance Program (SAP)

## Events and Community Engagement

- Public hikes
- Ag community gatherings
- Supporter events and growing our reach

## Partnerships and Outreach

- Buy Local
- Ag and conservation partnerships (MRCD, Marin Farm Bureau, NRCS, Point Blue, etc.)



# CHALLENGES & OPPORTUNITIES

Continue to listen and be a resource to our community

Implement durable agricultural conservation outcomes

Build and grow trust

Tell compelling stories about the multiple benefits of  
agricultural protection

Address urgent and emerging issues



Thank You

